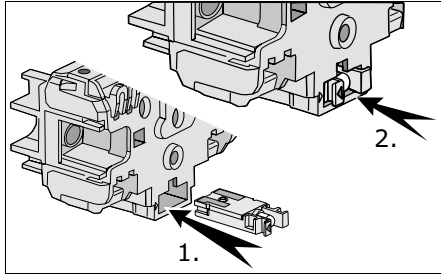
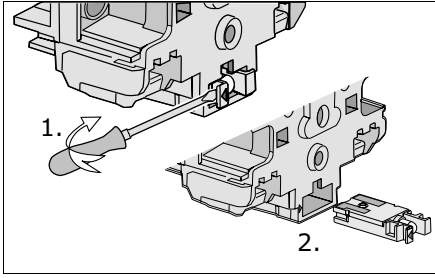


LED

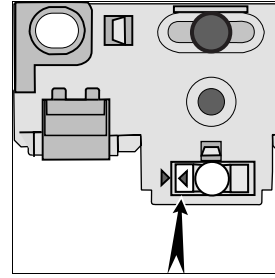
1fach-Steckdose / Prise simple / Presa semplice



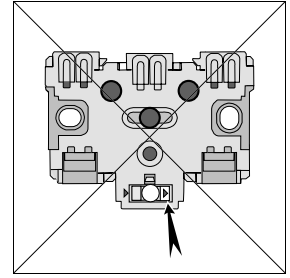
Einsetzen der LED
 Montage de la LED
 Inserimento LED



Entfernen der LED
 Retrait de la LED
 Rimozione LED

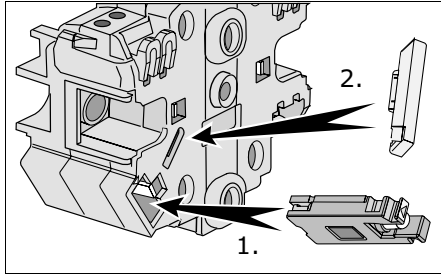


richtig
 correct
 corretto

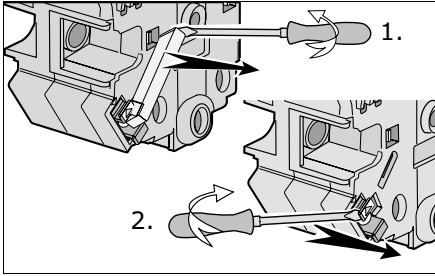


falsch
 incorrect
 errato

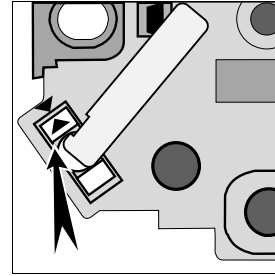
2fach-Steckdose / Prise double / Presa doppia



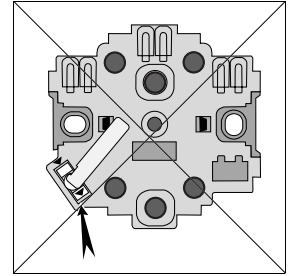
Einsetzen der LED und Lichtleiter
 Installation de la LED et du conducteur optique
 Inserimento LED e fotoconduttore



Entfernen der Lichtleiter und LED
 Retrait de la LED et du conducteur optique
 Rimozione LED e fotoconduttore

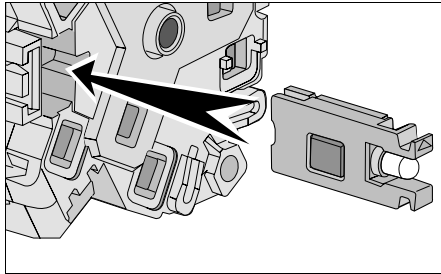


richtig
 correct
 corretto

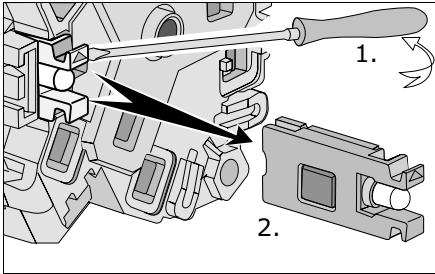


falsch
 incorrect
 errato

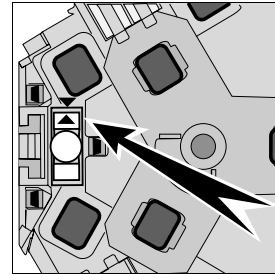
3fach-Steckdose / Prise triple / Presa tripla



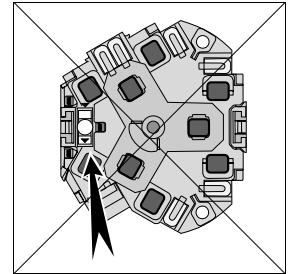
Einsetzen der LED
 Montage de la LED
 Inserimento LED



Entfernen der LED
 Retrait de la LED
 Rimozione LED



richtig
 correct
 corretto



falsch
 incorrect
 errato

Technische Daten LED / Données techniques LED / Dati tecnici LED

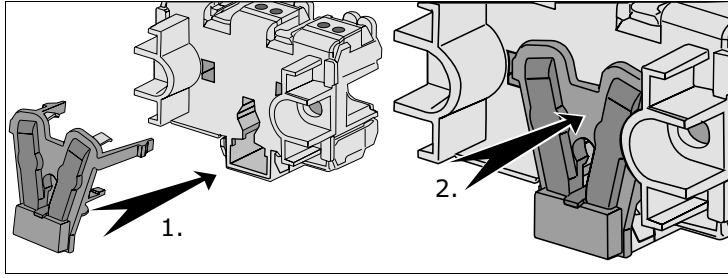
Spannung / Tension / Tensione : 230 V AC
 Stromverbrauch / Consommation / Consumo di corrente : 1,0 mA

Betriebshinweise / Consignes d'utilisation / Avvertenze per l'uso

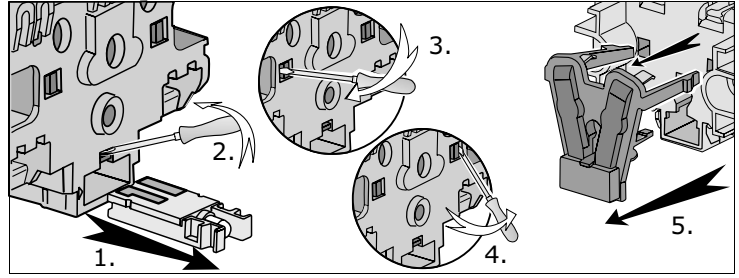
Die Funktionsfähigkeit der LED sollte regelmässig überprüft werden.
 Le bon fonctionnement de la LED doit être contrôlé à intervalles réguliers.
 Occorre controllare regolarmente il funzionamento dei LED.

Beleuchtungszusatz / Élément d'éclairage / Aggiunta illuminazione

1fach-Steckdose / Prise simple / Presa semplice

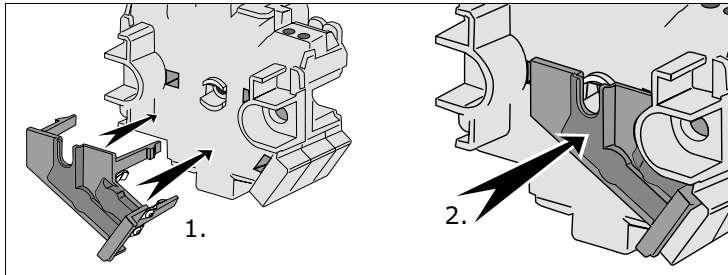


Einsetzen des Beleuchtungszusatzes
Installation de l'élément d'éclairage
Inserimento aggiunta di illuminazione

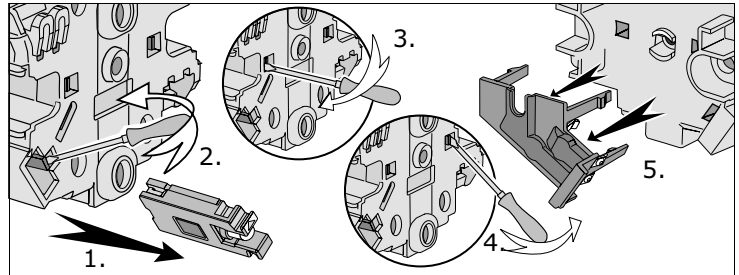


Entfernen des Beleuchtungszusatzes
Retrait de l'élément d'éclairage
Rimozione aggiunta di illuminazione

2fach-Steckdose / Prise double / Presa doppia

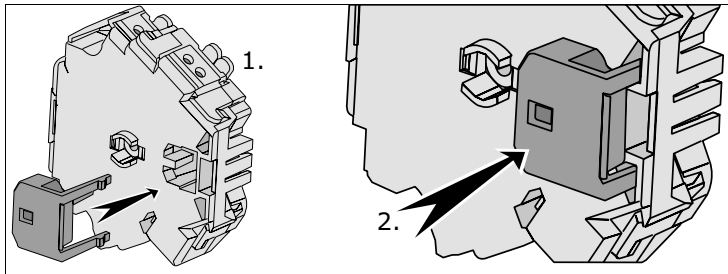


Einsetzen des Beleuchtungszusatzes
Installation de l'élément d'éclairage
Inserimento aggiunta di illuminazione

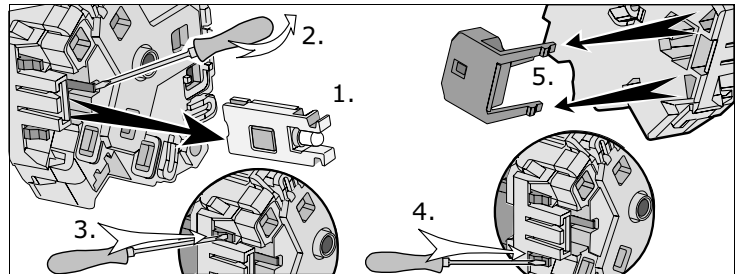


Entfernen des Beleuchtungszusatzes
Retrait de l'élément d'éclairage
Rimozione aggiunta di illuminazione

3fach-Steckdose / Prise triple / Presa tripla



Einsetzen des Beleuchtungszusatzes
Installation de l'élément d'éclairage
Inserimento aggiunta di illuminazione



Entfernen des Beleuchtungszusatzes
Retrait de l'élément d'éclairage
Rimozione aggiunta di illuminazione